

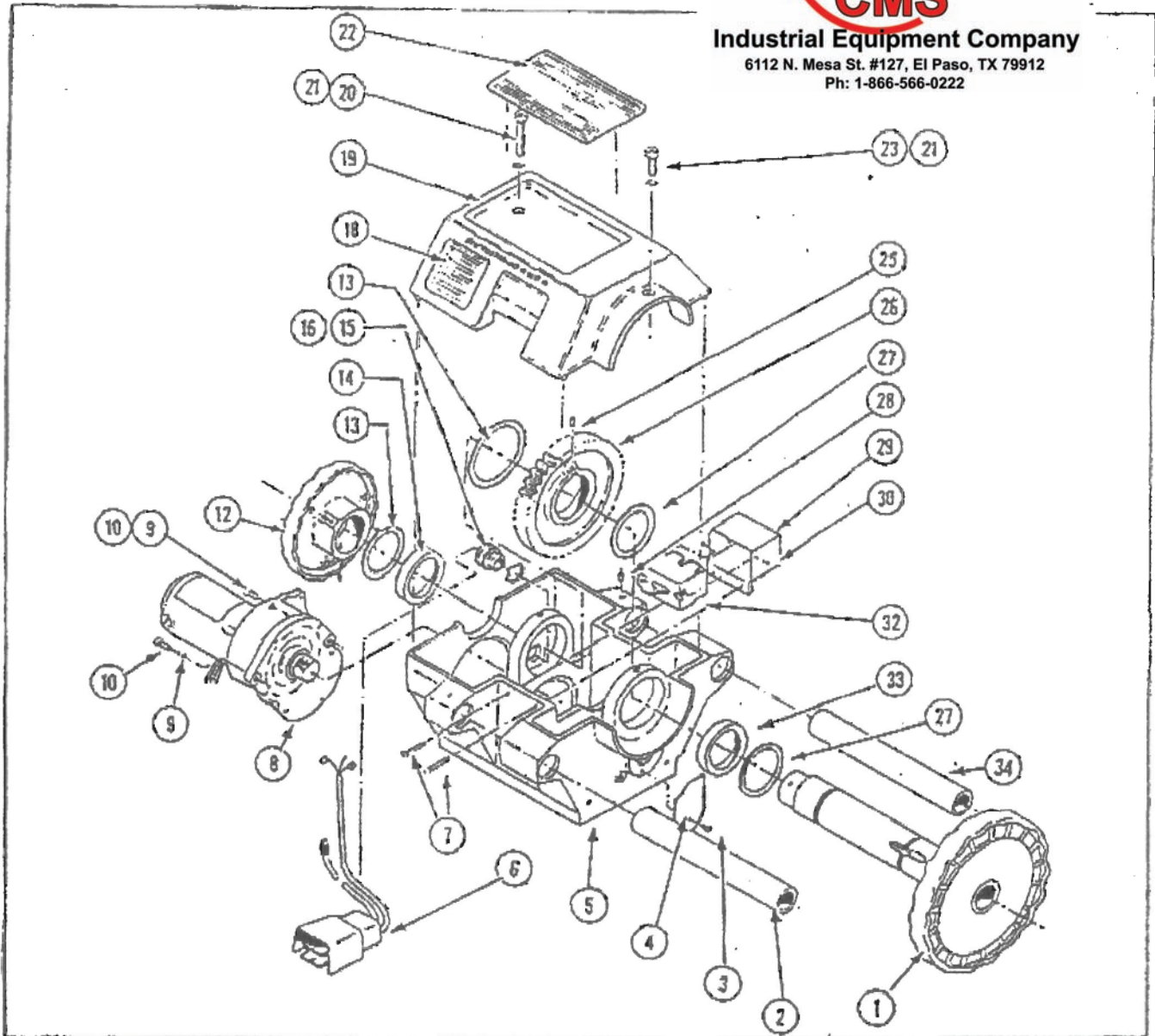
SM-300 MAIN ASSEMBLY



Industrial Equipment Company

6112 N. Mesa St. #127, El Paso, TX 79912

Ph: 1-866-566-0222



Item	Part No.	Qty	Description
1.	22300	1	Spindle & Front Chuck Assy.
2.	22008F	1	Bar, Carriage Support, Front
3.	G-103-S	1	Screw, 1/4-20x1/2
4.	22084	1	Cover Plate
5.	22101	1	Main Housing
6.	13840	1	Foot Switch Assy, 115V.
	13839	1	Foot Switch Assy, 230V.
7.	G-051	2	Screw, #10-24x1/28
8.	22400	1	Gearmotor Assy, 115V.
	22399	1	Gearmotor Assy, 230V.
9.	C-110-M	2	Lockwasher, 5/16
10.	F-206	2	Screw, 5/16-18x1
12.	22250	1	Chuck Assy, Centering
13.	YUS-325	1	Ring, Retaining
14.	22304	1	Bearing, Sleeve, Rear
15.	01376	1	Bushing, Strain Relief
16.	08769	1	Locknut, 1/2-14 NPS

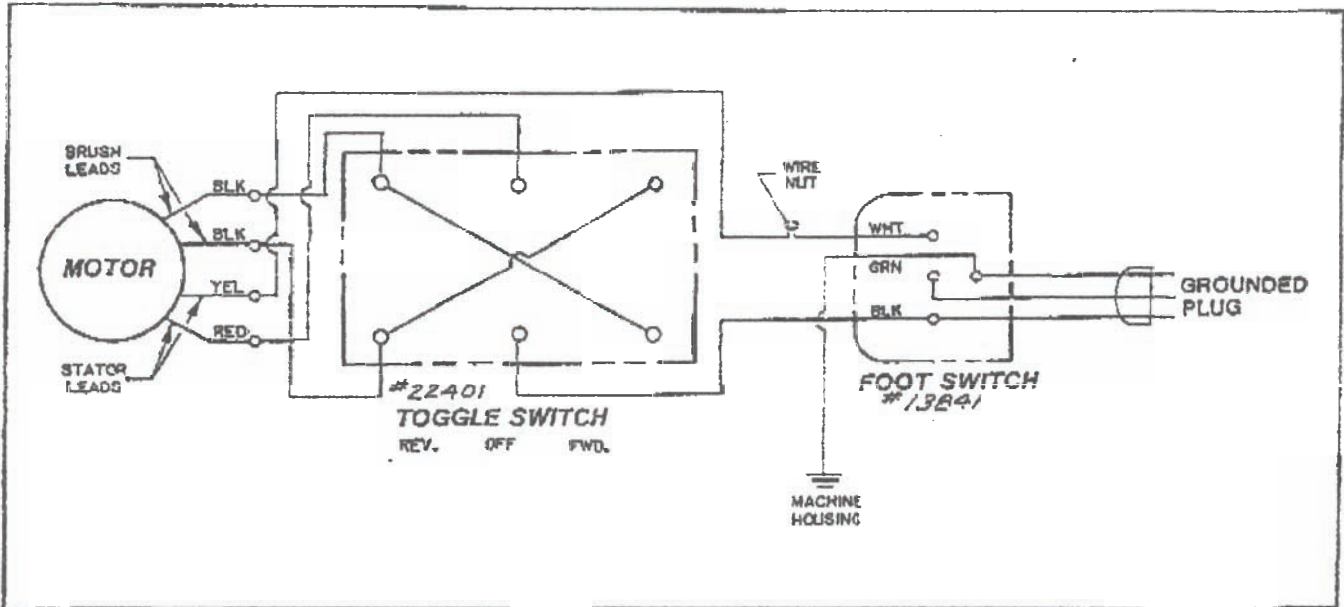
Item	Part No.	Qty	Description
18.	22600	1	Label, Warning, English
19.	22102	1	Cover, Spindle
20.	F-111	1	Screw, 1/4-20x2
21.	C-109-M	2	Lockwasher, 1/4
22.	22103	1	Mat, Rubber
23.	F-106	1	Screw, 1/4-20x7/8
25.	H-252-DS	1	Setscrew, 5/16-24x3/8
26.	22302	1	Gear, Spur, Spindle
27.	22306	1	Thrust Washer, Spindle
28.	H-106-D	2	Setscrew, 1/4-20x1/2
29.	22405	1	Enclosure, Oper. Switch
30.	KA-802	2	Screw, #8-32x1/4
32.	22401	1	Switch, Operating, Toggle.
	22431	1	Switch, Operating, Rotary
33.	22303	1	Bearing, Sleeve, Front
34.	22008R	1	Bar, Carriage Support, Rear

# SM-300 WIRING DIAGRAMS

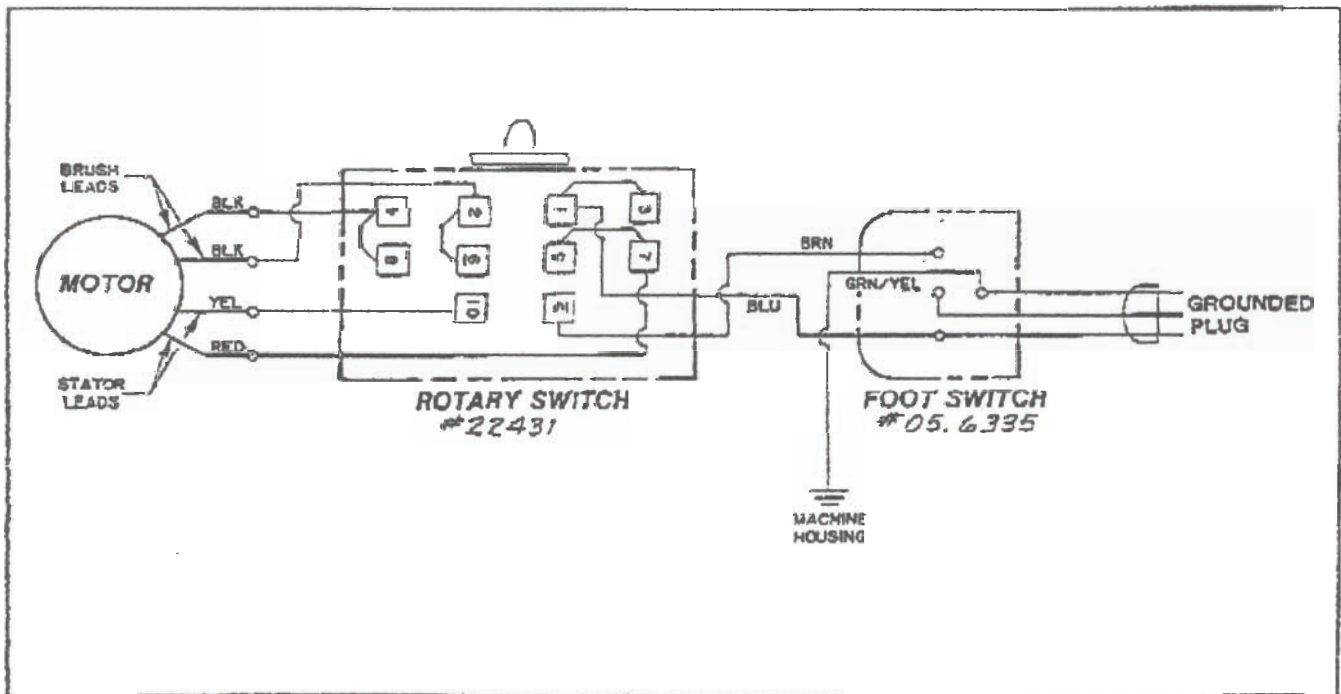


Industrial Equipment Company  
6112 N. Mesa St. #127, El Paso, TX 79912  
Ph: 1-866-566-0222

## TOGGLE SWITCH MODELS



## ROTARY SWITCH MODELS



**SM-300 MACHINE STANDS**

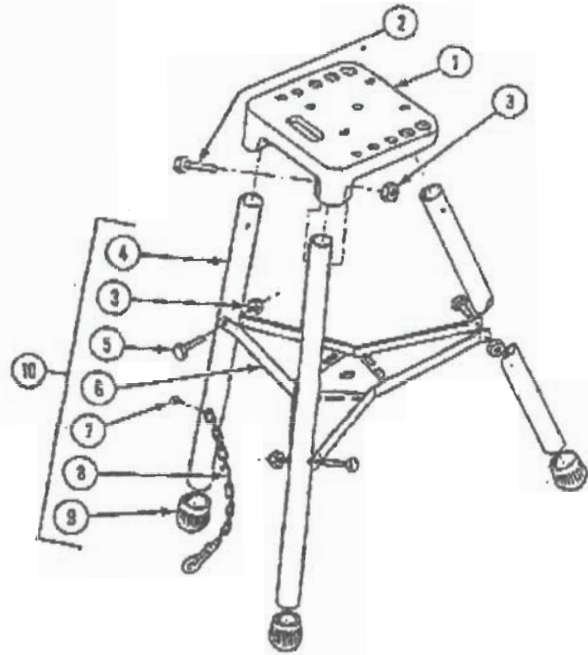


**Industrial Equipment Company**

6112 N. Mesa St. #127, El Paso, TX 79912  
Ph: 1-866-566-0222

**TRI-STAND #22650**

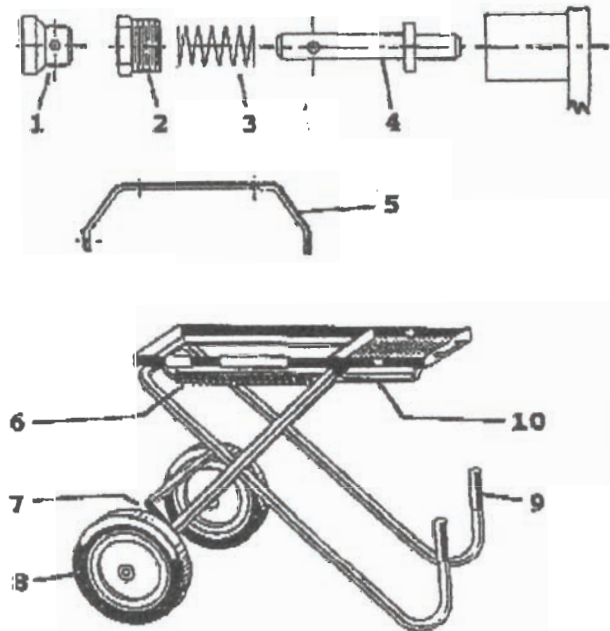
Item	Part No.	Qty	Description
1.	22510	1	Base Plate
2.	A-311-P	3	Screw, SocHdCap, 3/8-16 x 2 1/2
3.	B-103-SP	6	Nut, 3/8-16
4.	22641	3	Leg
5.	A-310-P	3	Screw, SocHdCap, 3/8-16 x 2 1/4
6.	22642	1	Tray Assembly, Folding
7.	NF-502-F	1	Screw, S-Tap, Slotted Pan Hd, #10-24 x 3/8
8.	22643	1	Chain with Hook
9.	10181	3	Cap, Rubber
10.	22640	1	Tri-Stand and Tray Assembly (Includes Items 3-9.)



**FOLDING STAND #05610**

Item	Part No.	Qty	Description
1.	12668	1	Knob, Plunger
2.	51203	1	Retainer, Plunger
3.	17474	1	Spring, Plunger
4.	17473	1	Plunger, Positioning
5.	17485	2	Bracket, Machine Mtng
N/S	G-204	8	Screw, Bracket Mtng
6.	17580	2	Spring, Extension
7.	17599	1	Axle
8.	01961	2	Wheel, 12"
9.	20256	2	Grip, Handle
10.	05610-2	2	Bracket, Guide
N/S	F-103	4	Screw, Guide Brkt Mtng

N/S - Not Shown



SM-300 GEARMOTOR ASSEMBLIES

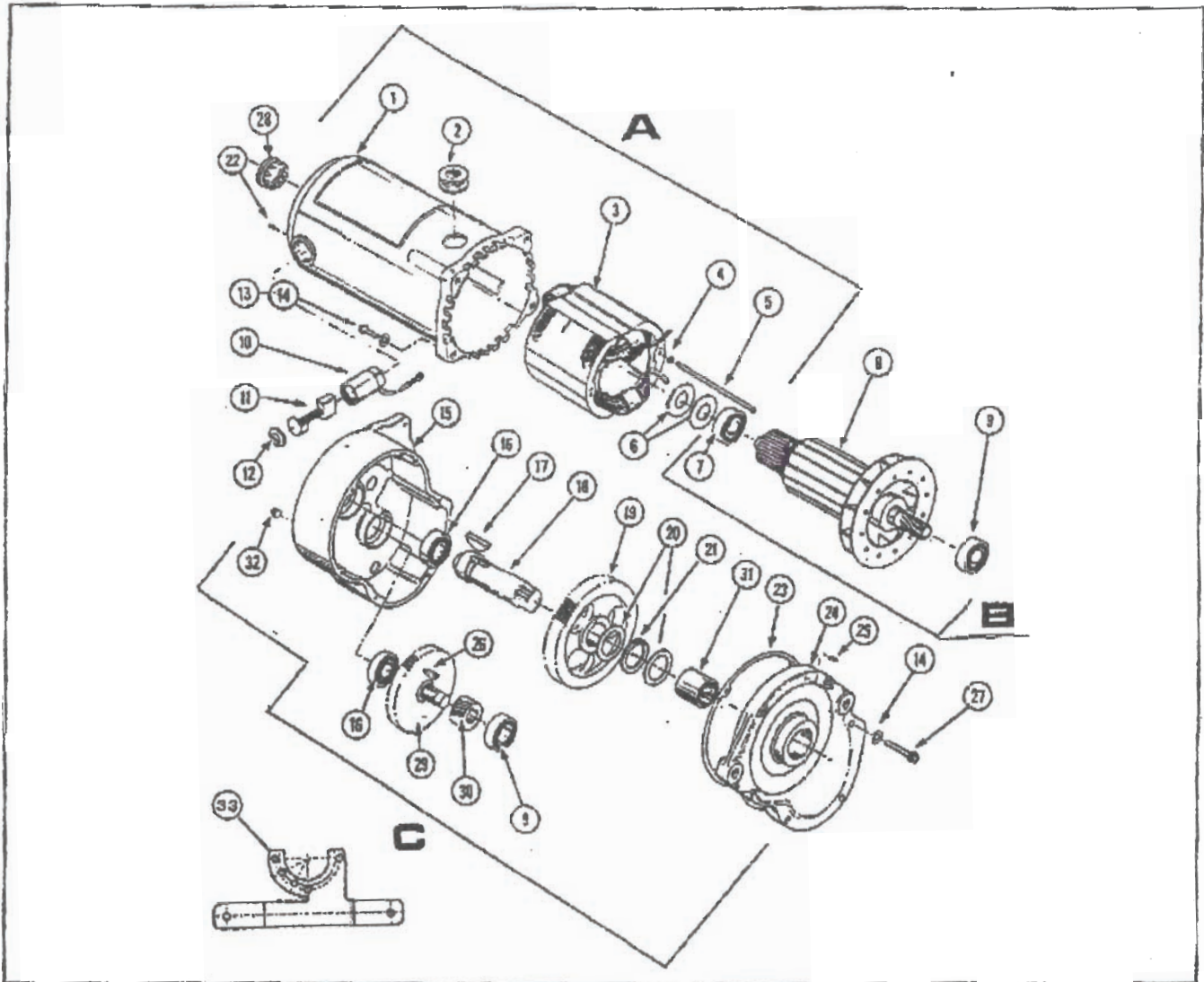


Industrial Equipment Company

6112 N. Mesa St. #127, El Paso, TX 79912

Ph: 1-866-566-0222

115V. - #22400 & 230V. - #22399



Item	Part No.	Description	Req'd	Item	Part No.	Description	Req'd
A	16681	Housing & Stator Assy, 115V	1	14	C-107-HC	Washer, Lock, #10	2
	16239	Housing & Stator Assy, 220/240V	1	15	10027	Housing, Gearcase, Power Drive	1
B	14818	Armature & Bearing Assy, 115V	1	16	10034	Bearing, Ball	2
	15662	Armature & Bearing Assy, 220/240V	1	17	W-806	Key, Woodruff	1
C	22420	Gearcase Assembly	1	18	22410	Gearshaft, Spur	1
1	12580	Housing, Motor	1	19	22331	Gear, Helical	1
2	13755	Grommet	1	20	12786	Race, Thrust Bearing	2
3	12330	Stator, Motor, 115V	1	21	12785	Bearing, Thrust	1
3	13947	Stator, Motor, 220/240V	1	22	1243E	Set-screw, Hxsc.	2
4	CB-107-A	Washer, Lock, #10	2	23	10035	Gasket, Gearcase	1
5	12558	Screw, #10-24x3.7"lg.	2	24	1248C	Cover, Gearcase	1
6	10047	Washer, Spring Tension	2	25	O-103	Pin, Dowel	1
7	13142	Bearing, Ball	1	26	W-405	Key, Woodruff	1
8	12607	Armature Assembly, 115V	1	27	F-053	Screw, Cap, Soc. Hd.	6
8	13946	Armature Assembly, 220/240V	1	28	10046	Plug, Hole, Mtd, 3/4"	1
9	13141	Bearing, Ball	1	29	10029	Gearshaft, Helical	1
10	22407	Holder, Motor Brush	2	30	22330	Gear, Helical	1
11	12636	Brush, Electrical Contact, 115V	2	31	22421	Bearing, Needle	1
11	13110	Brush, Electrical Contact, 220/240V	2	32	13140	Plug, Pipe, Hx. Soc.	1
12	13108	Brush Cap, Electrical Contact	2	33	22362	Motor Support Bracket	1
13	F-055	Screw, #10-24x1"lg.	2	N/S	F-206	Screw, Cap, Soc. Hd.	2
				N/S	C-110-M	Washer, Lock, Hel. Sprg	2

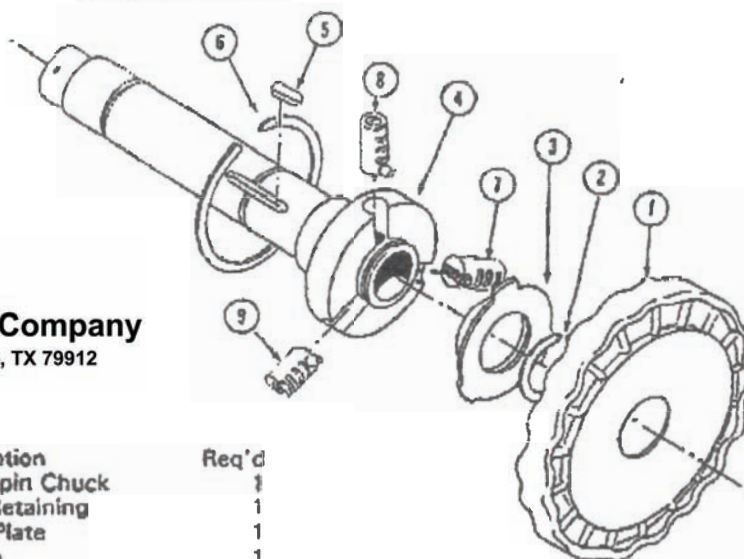
# SM-300 SPINDLE, FRONT CHUCK & JAW ASSEMBLIES

## SPINDLE & FRONT CHUCK ASSEMBLY



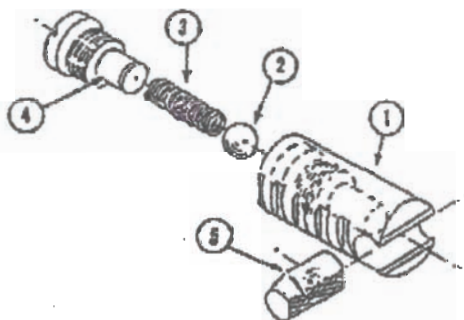
**Industrial Equipment Company**

6112 N. Mesa St. #127, El Paso, TX 79912  
Ph: 1-866-566-0222



Item	Part No.	Description	Req'd
1	12467	Grip, Spin Chuck	1
2	YUS-325	Ring, Retaining	1
3	12446	Scroll Plate	1
4	22301	Spindle	1
5	22307	Key, Square	1
6	12473	Ring, Retaining	1
7	22544	Jaw Assembly #1	1
8	22545	Jaw Assembly #2	1
9	22546	Jaw Assembly #3	1

## JAW ASSEMBLIES



### JAW ASSEMBLY No. 1 #22544

Item	Part No.	Description	Req'd
1	22448	Jaw Body, Seg. #1	1
2	12484	Ball, Jaw Insert Backing	1
3	12485	Spring, Compression	1
4	22470	Pin, Jaw Insert Stop	1
5	22468	Jaw Insert	1

### JAW ASSEMBLY No. 2 #22545

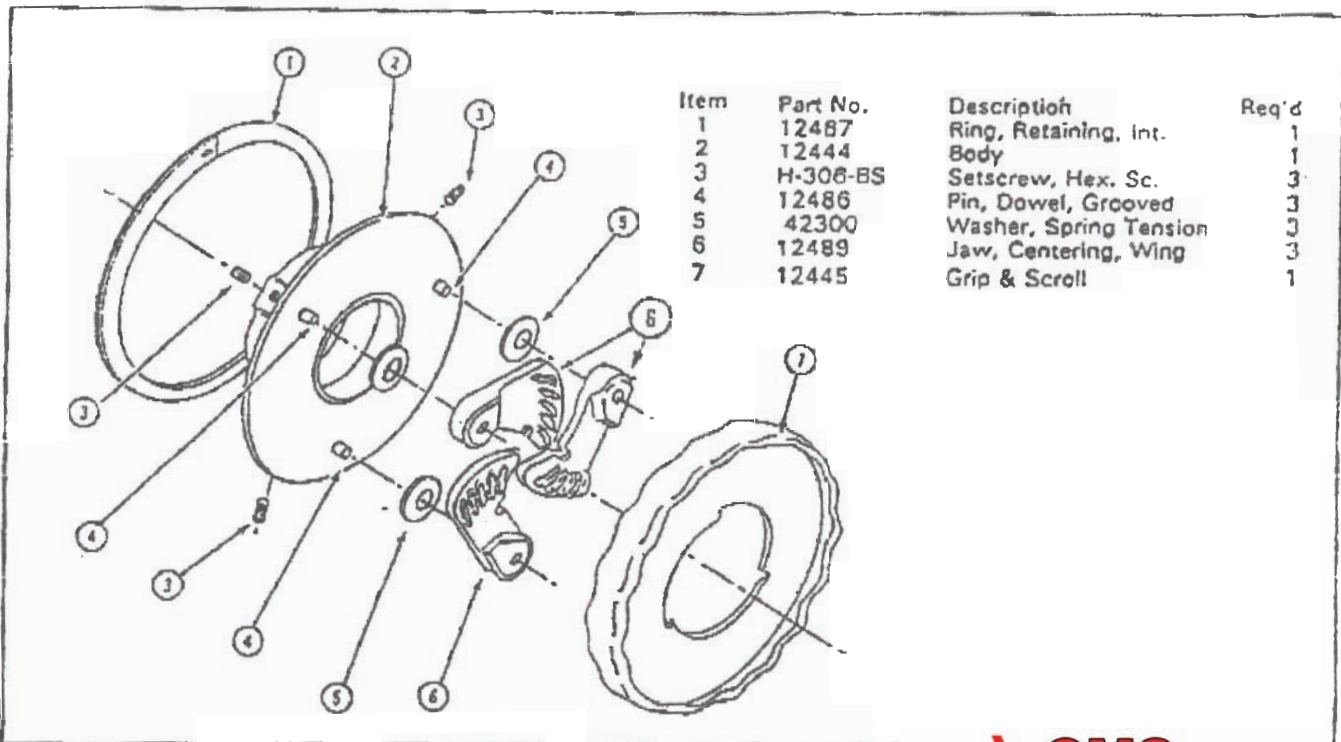
Item	Part No.	Description	Req'd
1	22449	Jaw Body, Seg. #2	1
2	12484	Ball, Jaw Insert Backing	1
3	12485	Spring, Compression	1
4	22470	Pin, Jaw Insert Stop	1
5	22468	Jaw Insert	1

### JAW ASSEMBLY No. 3 #22546

Item	Part No.	Description	Req'd
1	22450	Jaw Body, Seg. #3	1
2	12484	Ball, Jaw Insert Backing	1
3	12485	Spring, Compression	1
4	22470	Pin, Jaw Insert Stop	1
5	22468	Jaw Insert	1

## CENTERING CHUCK & CARRIAGE LEVER ASSEMBLIES

### CENTERING CHUCK ASSEMBLY #22250

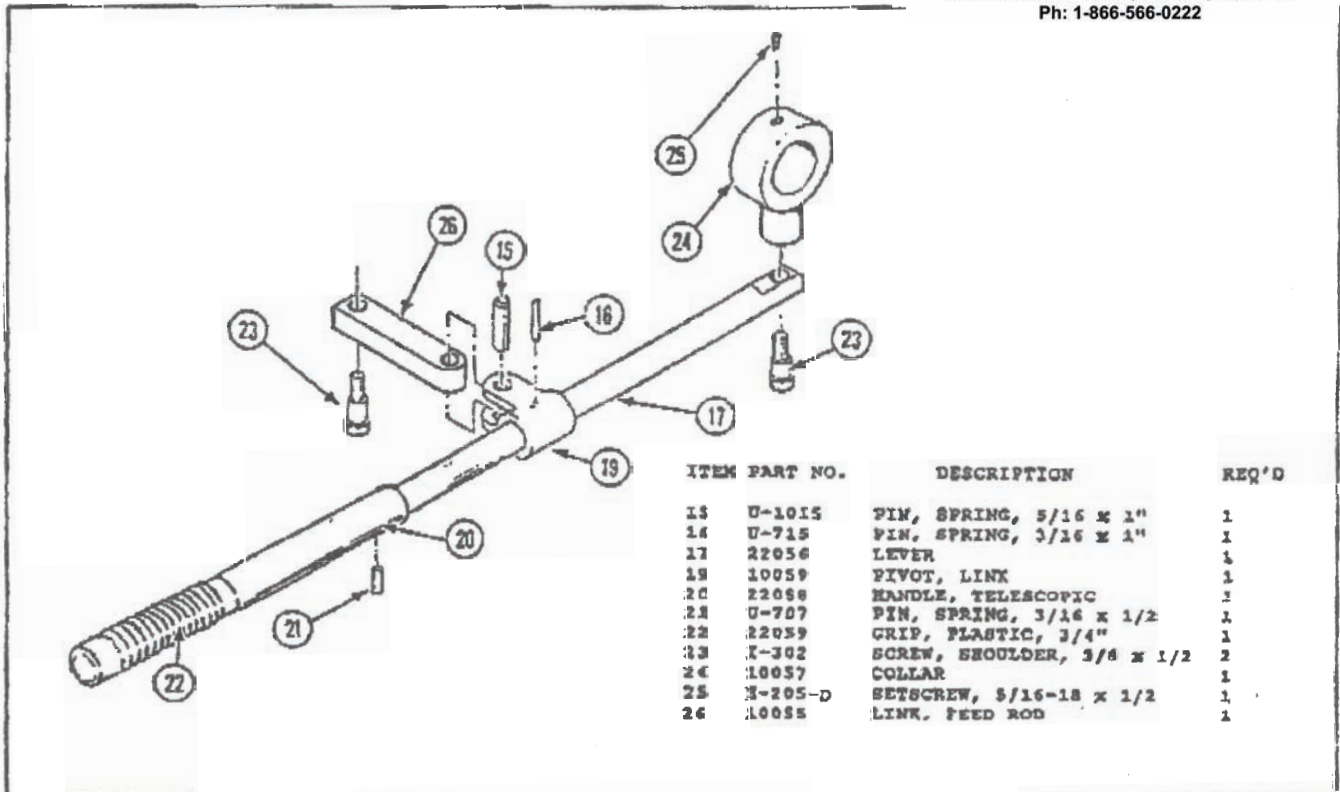


### CARRIAGE LEVER ASSEMBLY #22055

**CMS**

Industrial Equipment Company

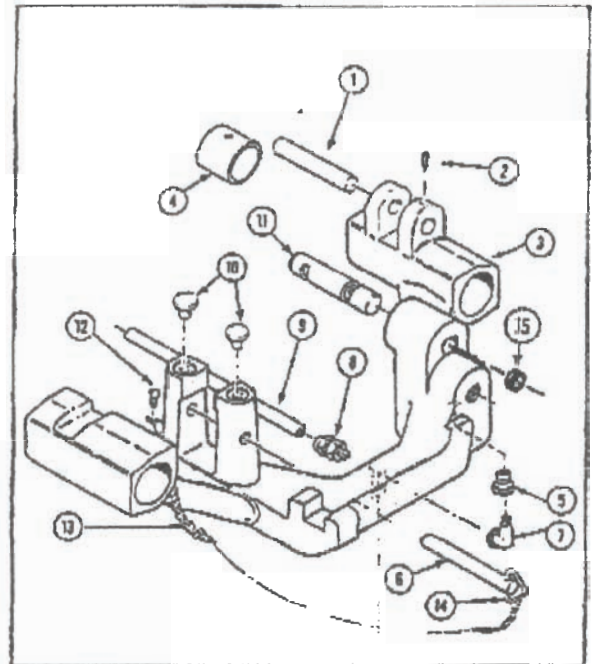
6112 N. Mesa St. #127, El Paso, TX 79912  
Ph: 1-866-566-0222



# CARRIAGE & CONE REAMER ASSEMBLIES

## STANDARD CARRIAGE #22051

ITEM	PART No.	DESCRIPTION	REQ'D
1	0-509	PIN, DOWEL, 3/8 x 2"	1
2	M-104-D	SETScrew, 1/4-20 x 3/8"	1
3	10051	CARRIAGE, STANDARD	1
4	22053	STOP, CARRIAGE	1
5	12893	BUSHING, PIPE REDUCER, 1/4-1/8 NPT	1
7	04556P	ELBOW, STREET, PIPE, 1/8x1/8x90	1
8	22085	CONNECTOR, TUBE, 1/4 x 3/8	1
9	22092	TUBE, TELESCOPIC OIL LINE	1
10	22054	PIN, DIE HEAD REST	2
11	22052	PIN, DIE HEAD HOLDING	1
15	13140	Pipe Plug	1

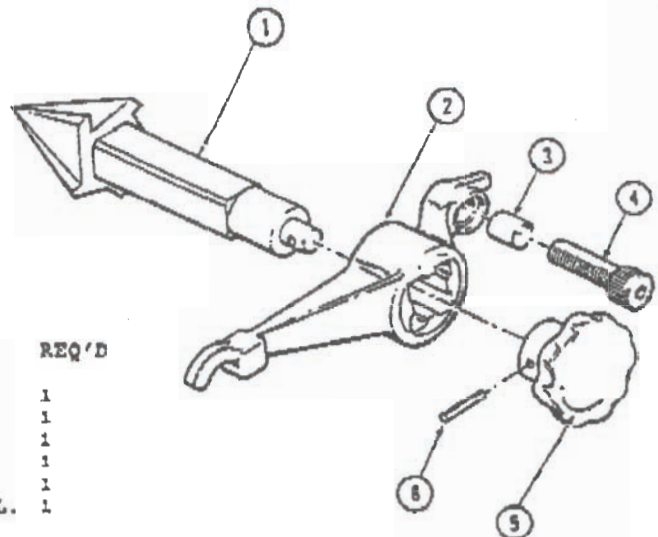


## R&L CARRIAGE #22051RL

ITEM	PART No.	DESCRIPTION	REQ'D
1	0-509	PIN, DOWEL, 3/8 x 2"	1
2	M-104-D	SETScrew, 1/4-20 x 3/8"	1
3	10051RL	CARRIAGE, RIGHT & LEFT	1
4	22053	STOP, CARRIAGE	1
5	12893	BUSHING, PIPE REDUCER, 1/4-1/8 NPT	1
6	13333	PIN, LOCKING, DIE HEAD	1
7	04556P	ELBOW, STREET, PIPE, 1/8x1/8x90	1
8	22085	CONNECTOR, TUBE, 1/8 x 3/8	1
9	22092	TUBE, TELESCOPIC OIL LINE	1
10	22054	PIN, DIE HEAD REST	2
11	22052	PIN, DIE HEAD HOLDING	1
12	MF-503-P	SCREW, CHAIN ATT., #10-24 x 1/2"	1
13	12177-5	CHAIN, 5" LONG	1
14	12179	RING, "D", SPLIT	1
15	13140	Pipe Plug	1

## CONE REAMER ASSEMBLY #10060

ITEM	PART NO.	DESCRIPTION	REQ'D
1	13212	CONE REAMER, 5-FLUTE	1
2	10065	HOLDER, CONE REAMER	1
3	02139-1	SPACER, ATTACHING SCREW	1
4	F-607-S	SCREW, REAMER ATTACHING	1
5	01652	KNOB, CONE REAMER	1
6	U-717	PIN, SPRING, 3/16"x1 1/4"L.	1



Industrial Equipment Company

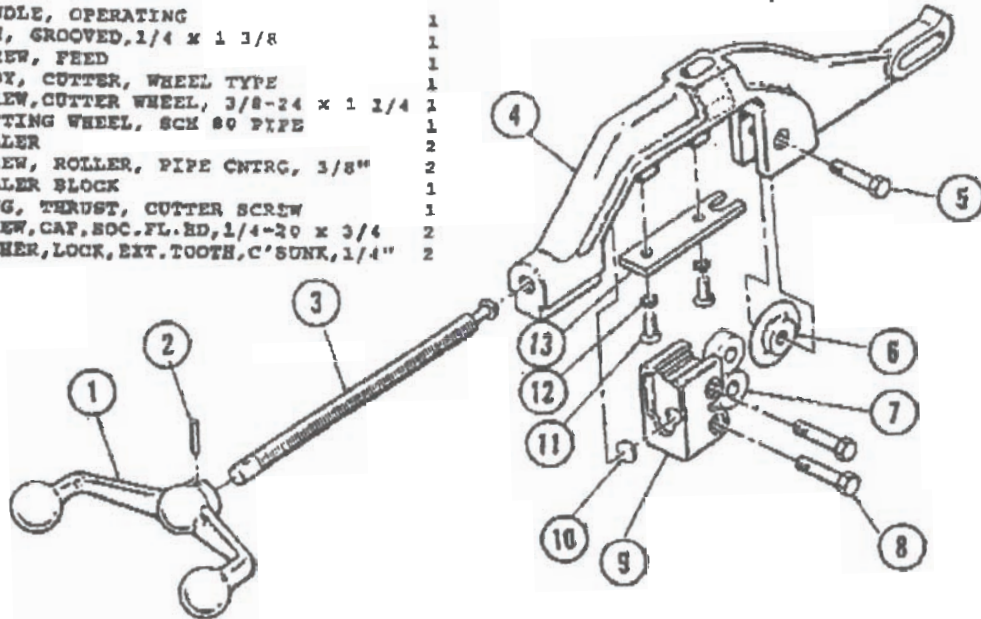
6112 N. Mesa St. #127, El Paso, TX 79912

Ph: 1-866-566-0222

# SM-300 CUTTER & WHEELED TRANSPORTER ASSEMBLIES

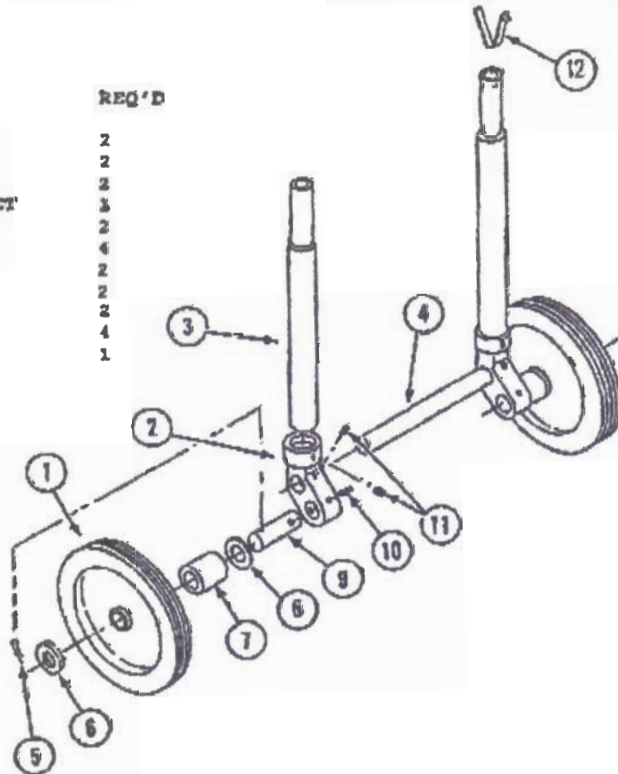
## CUTTER ASSEMBLY 1/8-2 #10070

ITEM	PART NO.	DESCRIPTION	REQ'D
1	01111	HANDLE, OPERATING	1
2	F-9061-A	PIN, GROOVED, 1/4 x 1 3/8	1
3	10073	SCREW, FEED	1
4	10071	BODY, CUTTER, WHEEL TYPE	1
5	01124	SCREW, CUTTER WHEEL, 3/8-24 x 1 1/4	1
6	01128	CUTTING WHEEL, SCH 80 PIPE	1
7	10075	ROLLER	2
8	10074	SCREW, ROLLER, PIPE CNTRG, 3/8"	2
9	10072	ROLLER BLOCK	1
10	10077	PLUG, THRUST, CUTTER SCREW	1
11	E-105	SCREW, CAP, SOC. FL. HD, 1/4-20 x 3/4	2
12	CD-109-A	WASHER, LOCK, EXT. TOOTH, C'SUNK, 1/4"	2



## WHEELED TRANSPORTER ASSEMBLY #10400

ITEM	PART NO.	DESCRIPTION	REQ'D
1	01961	TIRE, PNEUMATIC, 12"	2
2	10401	BRACKET, AXLE	2
3	10404	BAR, EXTENSION	2
4	10402	ROD, CONNECTING, AXLE BRACKET	3
5	T-129	PIN, COTTER	2
6	DA-209-NP	WASHER, FLAT, 3/4"	4
7	10406	SPACER, AXLE	2
9	10403	AXLE	2
10	U-912	PIN, SPRING, 1/4"x1 1/2" L.	2
11	H-283-D	SETSCREW, 5/16-18x3/8" L.	4
12	22009	CLIP, DOLLY RETAINING	1



**CMS**  
**Industrial Equipment Company**  
 6112 N. Mesa St. #127, El Paso, TX 79912  
 Ph: 1-866-566-0222


## DIE HEAD ASSEMBLIES

### SNAP-O-MATIC DUAL & QUAD DIE HEAD ASSEMBLIES 1/8"-2"

Item	Part No.	Description	Req'd
1	F-053	Screw, Soc. Hd., #10-24x3/4	4
1	C-107-HC	Washer, Lock, #10	4
2	01673	Retainer, Scroll Plate, 1/8-3/4	1
2	01433	Retainer, Scroll Plate, 1"-2"	1
3	01642	Scroll Plate, 1/8-3/4	1
3	01632	Scroll Plate, 1"-2"	1
4	01633	Lever, Operating	1
5	O-406	Pin, Dowel, Operating Lever	1
6	01646	Selector Plate, 1/8"	1
6	01645	Selector Plate, 1/4 & 3/8"	1
6	01644-1	Selector Plate, 1/2"	1
6	01644-2	Selector Plate, 3/4"	1
6	01635-1	Selector Plate, 1"	1
6	01634-1	Selector Plate, 1"-1 1/4-1 1/2	1
6	01636-1	Selector Plate, 1 1/2"	1
6	01636-2	Selector Plate, 2"	1
7	G-104-S	Screw, Soc. But Hd., X-20x5/8	4
7	CC-109-A	Washer, Lock, Ext. Tooth, X"	4
8	F-107	Screw, Cap, Soc. Hd., X-20x1"	1
9	13113	Stop, Scroll Plate	1
10	01641	Housing, Die Head, 1/8-3/4	1
10	01631	Housing, Die Head, 1"-2"	1
16	01431-1	Pin, Pivot, Die Head	1
17	-	Set of Threading Dies, (specify size & type)	1
18	13385	Bell, Bearing, 5/16 Dia.	1
19	12220	Spring, Compression	1
20	12135	Plug, Expansion, 3/8 Dia.	1

### UNIQUAD DIE HEAD ASSEMBLY 1/8"-2"

Item	Part No.	Description	Req'd
1	01433	Retainer, Scroll Plate	1
2	01432	Scroll Plate, Uniquad	1
3	01437	Lever, Operating	1
4	O-407	Pin, Dowel, 5/16x1 1/2	1
5	O-703	Pin, Dowel, 3/8x1 1/4	1
6	02183	Link, Operating Lever	1
7	02182	Screw, Link Pivot	1
8	DA-204-N	Washer, Flat, 3/8"	1
9	01436	Lever, Lacking, Scroll Plate	1
10	-	Set of Threading Dies (specify size & type)	1
11	01431	Housing, Die Head	1
N/S	O-202	Pin, Dowel, 3/16x5/8	2
12	01431-1	Pin, Die Head	1
13	F-053	Screw, Cap, Soc. Hd., #10-24x3/4	4
13	C-107-HC	Washer, Lock, Hal. Spring, #10	4
14	13385	Bell, Bearing, 5/16 DIA	1
15	12220	Spring, Compression	1
16	12135	Plug, Expansion, 3/8"	1



**Industrial Equipment Company**  
 6112 N. Mesa St. #127, El Paso, TX 79912  
 Ph: 1-866-566-0222

# DIE HEAD & PIPE STAND ASSEMBLIES



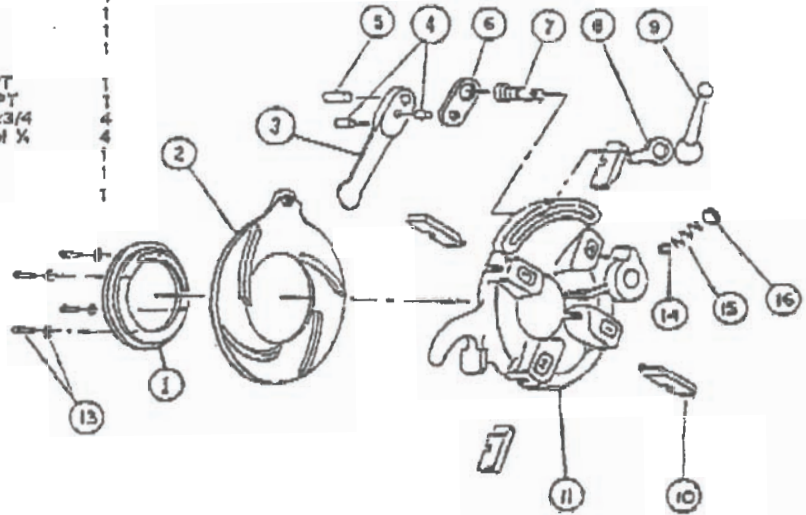
Industrial Equipment Company

6112 N. Mesa St. #127, El Paso, TX 79912

Ph: 1-866-566-0222

## UNIQUAD-R STYLE DIE HEAD ASSEMBLY 1/8"-2"

Item	Part No.	Description	Req'd
1	22227	Retainer, Scroll Plate	1
2	22226	Scroll Plate	1
3	22228	Lever, Operating	1
4	O-403	Pin, Dowel, 5/16x3/4	2
5	O-701	Pin, Dowel, 1/2x1"	1
6	22229	Link, Operating Lever	1
7	02182	Screw, Link, Pivot	1
8	22236	Washer, Locking Lever	1
9	01436	Lever, Locking, Scroll Plate	1
10	-	Set of Threading Dies (specify size & type)	1
11	22225	Housing, Thdg. Hd., 1/8-2"NPT	1
11	22225BS	Housing, Thdg. Hd. 1/8-2"BSPT	1
13	F-105	Screw, Cap. Sec. Hd. 1/4-20x3/4	4
13	C-109-HC	Washer, Lock, Hel. Spg. HI Col X	4
14	13385	Ball, Bearing, 5/16 Dia.	1
15	12220	Spring, Compression	1
16	12138	Plug, Expansion, 3/8 Dia.	1



## SUPER JACK PIPE STANDS



- V-Head, 2000 lb. capacity
- Ball transfer head, 1000 lb capacity
- Adjustable height of 27" - 50"
- Heavy duty tubular steel construction
- Optional ball transfer head

PART NO.	DESCRIPTION	WEIGHT
1.0640	Super Jack with Vee Head	25.00 lbs.
0.0101	Super Jack with Ball Transfer Head	31.00 lbs.

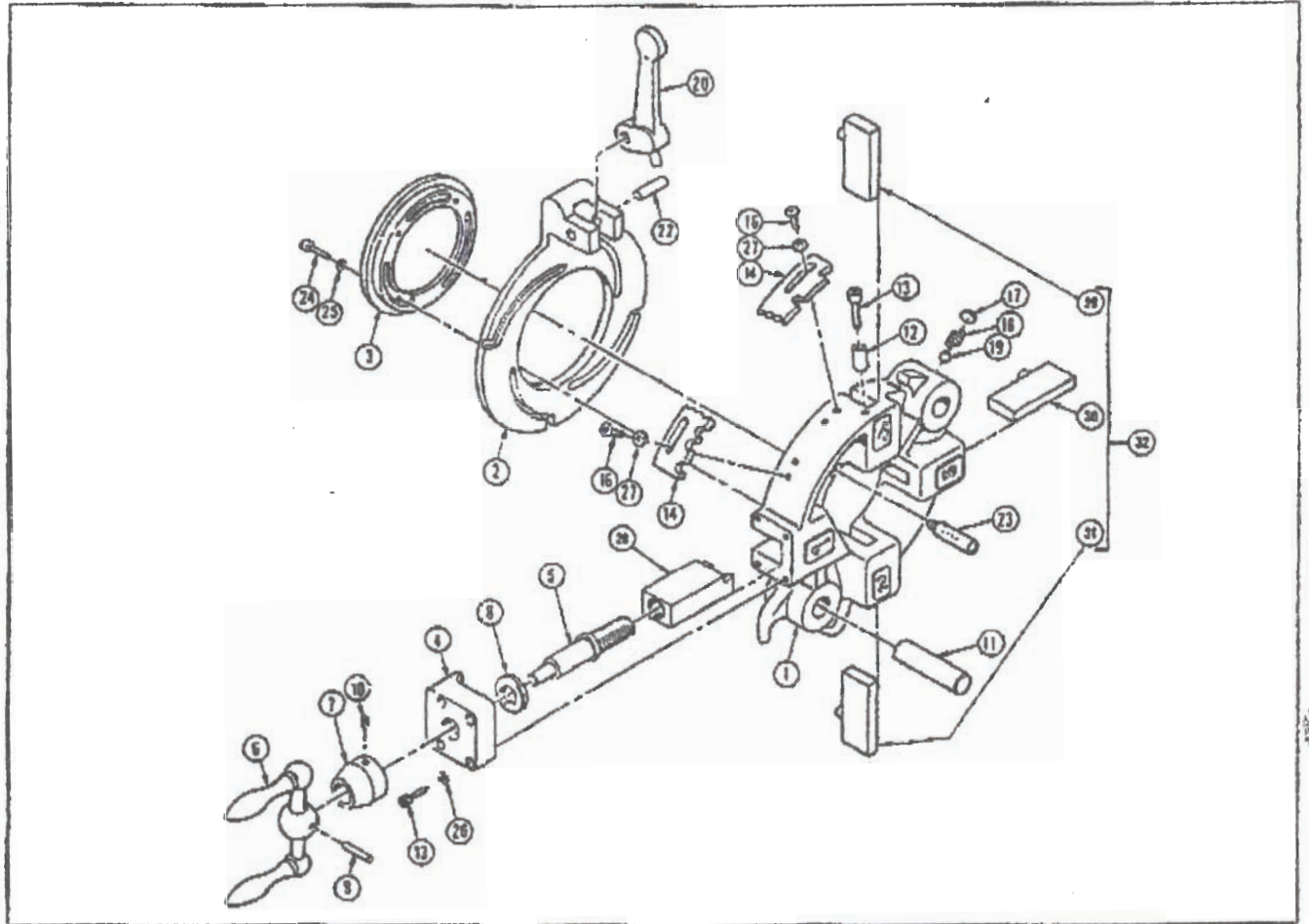
**GROOVING/BEVELING HEAD ASSEMBLY**

**GROOVING/BEVELING HEAD 3/4"-2" #12200-2**



**Industrial Equipment Company**

6112 N. Mesa St. #127, El Paso, TX 79912  
Ph: 1-866-566-0222



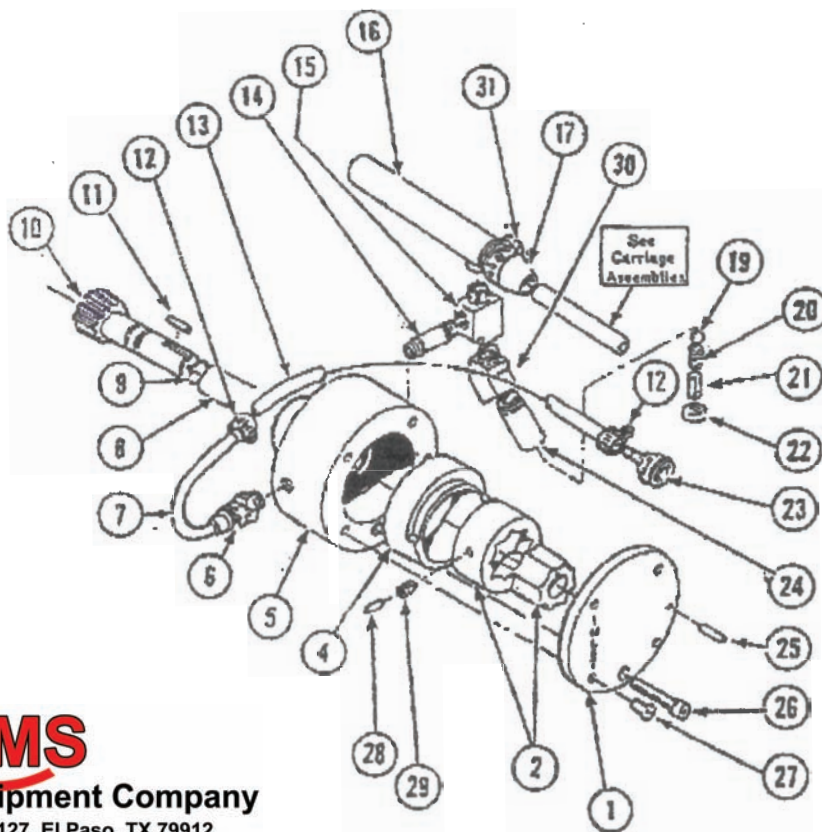
Item	Part No.	Description	Req'd
1.	12210	Housing, Grooving Head	1
2.	1632	Scroll Plate, SOM	1
3.	13487G	Retainer, Scroll Plate	1
4.	12217	Bearing Block, Groover Housing	1
5.	12085	Screw, Feed, Grooving Tool	1
6.	12215	Handle, Feed Screw, Grooving Tool	1
7.	12097	Indicator, Groove Depth	1
8.	12096	Bearing, Thrust	1
9.	P-706-A	Pin, Grooved, Handle Adj., 3/16" x 1"	1
10.	H-103-A	Set Screw, Groove Depth Indicator, 1/4"-20 x 5/16"	1
11.	1431-1	Pin, Die Head Rest	1
12.	13113	Spacer, Scroll Plate Stop	1
13.	F-107	Screw, Scroll Plate Stop and Bearing Block Adj., 1/4"-20 x 1 Soc. Hd. Cap	5
14.	13386	Selector Plate, 3/4"-2"	1
16.	G-104	Screw, Selector Plate Adj., 1/4"-20 x 1/4" But. Hd. Cap	4
17.	12135	Plug, Expansion, 3/4"	1
18.	12220	Spring, Compression, Die Head	1
19.	13385	Ball, Bearing, 5/16" dia.	1
20.	1633	Lever and Pin Assembly, Operating, Snuz-O-Matic	1
22.	O-406	Pin, Dowel, Operating Lever Pivot, 5/16" x 1 1/4" lg.	1
23.	12216	Tube, Oil Dispensing	1
24.	IF-053	Screw, Ret. Plate Adj., 10 -24" x 4" Soc. Hd. Cap	1

Item	Part No.	Description	Req'd
25.	C-107-HC	Washer, Spring Lock, No. 10 Hi-Collar	4
26.	C-109-HC	Washer, Spring Lock, 1/4" Hi-Collar	4
27.	OC-109-A	Washer, Lock, 1/4" Ext. Tooth	4
28.	—	See Optional Accessories below	
29.	13388	Die, Centering, Left Hand	1
30.	13389	Die, Centering, Straight	1
31.	13387	Die, Centering, Right Hand	1
32.	13390	Set of three centering dies	1

**Optional Accessories  
Not Included In #12200-2**

28.	12205	Grooving Tool, Victaulic, 1"-2" (Sch. 80 Max.)
	12206	Cut-Off Tool, 1"-2"
	12212	Beveling Tool, 37 1/2°, 1"-2"
	12269	Beveling Tool, 45°, 1"-2"
	12678	Grooving Tool, First Step, 1"-2"
	13088	Grooving & Cut-Off Tool, Type "ES," 2"
	13767	Beveling Tool, 45° J-Bevel, 1"-2" (Sch. 80 Max.)
	13310	Reaming-Chamfering Tool, 30° x 25°, 3/4"-1 1/2"
	13844	Reaming-Chamfering Tool, Michigan Pipe, 10° x 30°, 1"-2"
	13779	Reaming-Chamfering Tool, 10° x 37 1/2°, 1"-2"
	12219	Grooving Tool, Sarni Pipe, 1"-2"
	13381	Grooving Tool, Tzan Plastic Lined Pipe, 1"-2" (Sch. 40 Max.)

# OIL PUMP ASSEMBLIES



**Industrial Equipment Company**

6112 N. Mesa St. #127, El Paso, TX 79912

Ph: 1-866-566-0222

## STANDARD OIL PUMP ASSY. #22090

*Most popular*

Item	Part No.	Description	Req'd
1	22082	Cover, Std.	1
2	12293	Gerotor Set	1
4	-	-not in standard pump	
5	22080	Housing, Oil Pump, Std.	1
6	22085	Connector, Tube, MP 1/8xFT3/8	1
7	22093	Tubing, Intake	1
8	12292	Bearing, Sleeve	1
9	12291	Seal, O-Ring	2
10	22316	Gearshaft, Spur, 12T	1
11	O-103	Pin, Dowel	1
12	13352	Clamp, Hose, Worm Dr., 1/4 thru 5/8	2
13	20351-20	Tubing, Plastic, Clr, 1/4x1/8	1
14	22088	Nipple, Pipe, Galv, 1/8x1 3/8	1
15	22086	Tee, Pipe, MP1/8xFP1/8xFP1/8	1
16	22095	Oil Line Housing, Telescopic	1
17	01564	Sleeve, Seal	1
19	01526	Ball, Bearing, 9/32 dia.	1
20	01527	Spring, Compr.	1
21	01528	Screw, Adj., Oil Press. Reg. Valve	1
22	B-253	Nut, Hex, 3/8-24	1
23	22075A	Coupling, Q Disconnect, Female	1
24	22089	Body, Pressure Relief Valve	1
25	-	-not in standard pump	
26	F-113-S	Screw, Cap, Sec. Hd., 1/2-20x2 1/2	1
27	NG-405-D	Screw, S-Tap, Sl. Fe. Hd., #8-32x5/8	4
28	-	-not in standard pump	
29	-	-not in standard pump	
30	22094	Elbow, Street, Pipe, 1/8x1/8x45°	1
31	01568	Clamp, Hose, Worm Dr., 1/2 thru 1 1/16	1

## R&L OIL PUMP ASSY. #22091

*For R&L hand threading machine*

Item	Part No.	Description	Req'd
1	22083	Cover, R&L	1
2	12293	Gerotor Set	1
4	12272	Ring, Eccentric, R&L Only	1
6	22081	Housing, Oil Pump, R&L	1
6	22085	Connector, Tube, MP1/8xFP3/8	1
7	22093	Tubing, Intake	1
8	12292	Bearing, Sleeve	1
9	12291	Seal, O-Ring	2
10	22316	Gearshaft, Spur, 12T, Oil Pump	1
11	O-103	Pin, Dowel, 1/8x5/8	1
12	13352	Clamp, Hose, Worm Dr., 1/4 thru 5/8	2
13	20351-20	Tubing, Plastic, Clr, 1/4x1/8	1
14	22088	Nipple, Pipe, Galv, 1/8x1 3/8	1
15	22086	Tee, Pipe, MP1/8xFP1/8xFP1/8	1
16	22095	Oil Line Housing, Telescopic	1
17	01564	Sleeve, Seal	1
19	01526	Ball, Bearing, 9/32 dia.	1
20	01527	Spring, Compr.	1
21	01528	Screw, Adj., Oil Press. Reg. Valve	1
22	B-253	Nut, Hex, 3/8-24	1
23	22075A	Coupling, Q Disconnect, Female	1
24	22089	Body, Pressure Relief Valve	1
25	P-502-B	Pin, Grooved, R&L Only	1
26	F-113-S	Screw, Cap, Sec. Hd., 1/2-20x2 1/2	1
27	NG-405-D	Screw, S-Tap, Sl. Fe. Hd., #8-32x5/8	4
28	12275	Plunger, Friction, R&L Only	1
29	12280	Spring, Compr, R&L Only	1
30	22094	Elbow, Street, Pipe, 1/8x1/8x45°	1

# OIL PAN ASSEMBLY

OIL PAN ASSEMBLY, 1Gal. #22070

item	Part No.	Description	Req'd
1	22071	Oil Pan	1
2	22072	Strainer, Oil Pan	1
3	NF-502-F	Screw, S-Tap, #10-24x3/8	2
4	22075B	Coupling, O Disconnect, Male	1
5	12798	Elbow, Pipe, 1/2x90°	1
6	22073	Fitting, Oil Filter	1
7	22074	Barrel, Oil Filter	1
8	22076	Filter Disc, Cutting Oil	1
9	G-204-S	Screw, Cap, 5/16-18x3/4	2
10	13342	Seal, O-Ring	1
11	22077	Plug, Pipe, 3/8-18 NPT, Plastic	1



**Industrial Equipment Company**

6112 N. Mesa St. #127, El Paso, TX 79912

Ph: 1-866-566-0222