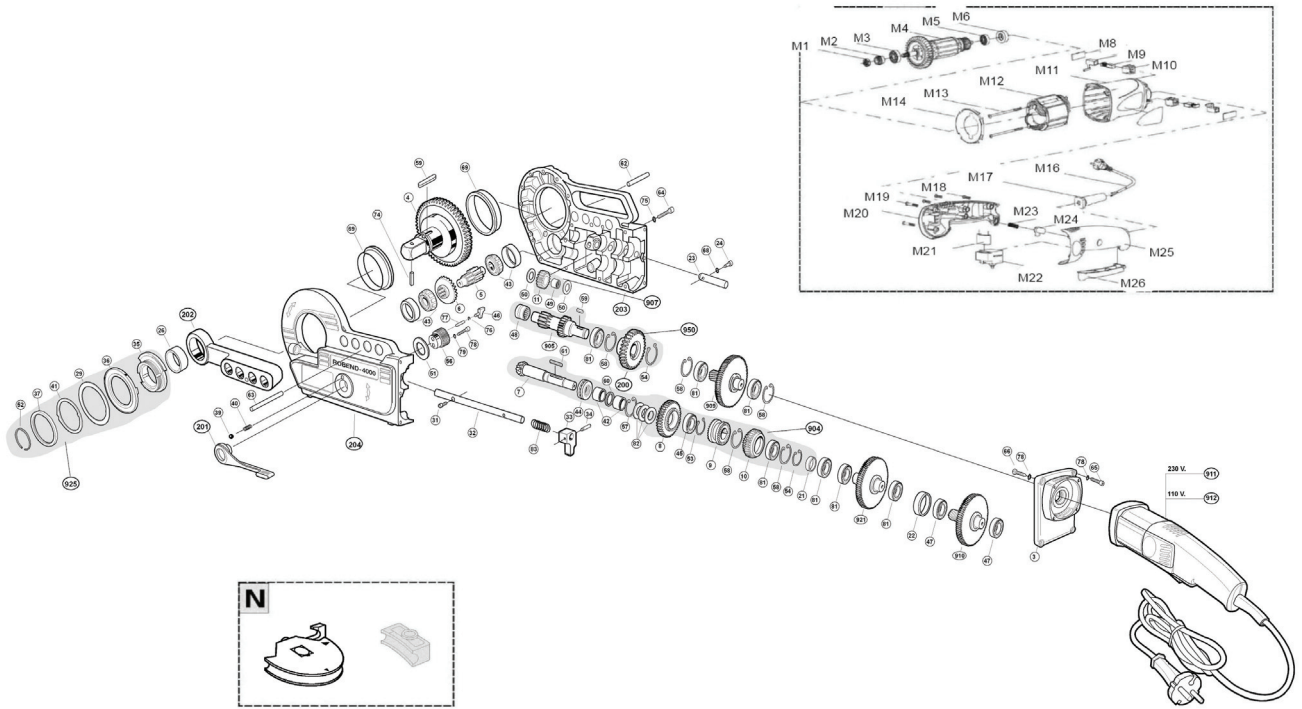


ROBEND 4000

CMS
Industrial Equipment Company
6112 N. Mesa St. #127, El Paso, TX 79912
Ph: 1-866-566-0222



ROBEND 4000

Item no.	Description	Article no.	Quantity
---	Grades indicator	762002900	1
3	gear cover	764000300	1
4	drive gear with shaft	762000400	1
5	gear shaft	762000500	1
6	crown wheel	762000600	1
7	axle drive shaft	762000700	1
8	gear wheel	762000800	1
9	clutch	762000900	1
10	gear wheel	762001000	1
11	gear wheel	762001100	1
21	hollow shaft	762002100	1
22	hollow shaft	762002200	1
23	holding bolt	762002300	1
24	locking pin	762002400	1
26	distance ring	762002600	1
31	cylinder head screws	762003100	1
32	gear change rod	762003200	1
33	control joint	762003300	1
34	safety bolts	762003400	1
39	ball D/6,35	762003900	1
40	pressure spring	762004000	1
42	shaft drives	762004200	2
43	roller bearing	762004300	2
44	needle roller bearing	762004400	1
45	ball bearing	762004500	1
46	shift finger	762004600	1
47	ball bearing 609	762004700	2
48	ball bearing NK 15/16	762004800	1
49	ball bearing NK 1210	762004900	1
50	thrust washer DIN988 PS 15X22X0,5	762005000	1
51	distance washer AS 2035	762005100	1
53	circlip 17x1 DIN 471 until 10/2009	762005300	2
54	Snap-ring c s-15	762005400	2
56	Reversing gear	762005600	1
57	locking ring D/INT.35 DIN472	762005700	1
58	locking ring 32 DIN472	762005800	5
59	fitted key DIN 6885 5x5x12	762005900	1
60	locking ring	762006000	1
61	fitted key DIN 6885 5x5x28	762006100	1
62	bolt 8x40 DIN 6325	762006200	1
63	bolt 8x40 DIN 6326	762006300	1
64	Screw M5x35	762006400	16
65	cylinder screw DIN912 M4X16	762006500	4
66	screw motor mounting DIN7049T	7640066	4
68	washer J 6.4 DIN 6797	762006800	1
74	locking pin	102120700	1
75	Slide bearing	862000400	2
76	spring for shift finger	762007600	1
77	Pin 4x12 DIN 6325	762007700	16
78	toothed washer J-4,1	862005100	4
79	Washer 5 DIN 128	862004200	1
80	cylinder screw M5x25 DIN 912	862004500	1
81	Ball bearing 16002	862003500	7
82	Washer 34,5X25,5X0,20	762007200	3
83	Spring for switch joint	1300005297	1
200	gear wheel	1300003488	1
201	reversing lever	1200001310	1
202	shank holding	1200001310	1
203	gearbox housing	1000001775	1
204	gearbox case cap	1000001773	1
904	Conical Pinion Shaft	762090400	1
905	drive shaft	762090500	1
907	toothed wheel driven	762090700	1
909	toothed wheel	762090900	1
910	toothed wheel	7620910	1
911	motor 230V	764091100	1
912	motor cpl. 110V	764091200	1
921	toothed wheel	1300003489	1
923	Attack pinion set (Pces. 5-6 and 43)	762092300	1
925	adjustment scale	762092500	1

ROBEND 4000

Item no.	Description	Article no.	Quantity
950	drive shaft complete	1200001595	1
M1	M7 Nut	764C20100	0
M2	Pinion gear Robend 3000	762006900	1
M3	Ball bearing 608ZZ	764C20300	1
M4	Armature R 3000 230V	764C20400	1
M4	Armature R 3000 110V	764C22700	1
M5	bearing 607 2SR	764C20500	1
M6	Bearing rubber sleeve R 3000	764C20600	1
M8	Copper brush frame R 3000	764C20800	1
M9	Brush Robend 3000	764C20900	1
M10	Plastic brush box R 3000	764C21000	1
M11	Motorhousing Robend 3000	764C21100	1
M12	Stator Robend 3000 110V	764C22800	1
M12	Stator Robend 3000 230V	764C21200	1
M13	Tapping screw 4x70 R3000	764C21300	2
M14	Plastic Board Robend 3000	764C21400	1
M16	Cable cpl. Robend 3000 R 230V	764C21600	1
M16	Cable cpl. Robend 3000 R 110V	764C22900	1
M17	Cable bushing Robend 3000	764C21700	1
M18	Tapping screw 4x19	764C21800	3
M19	Tapping screw 4x38	764C21900	2
M20	Upper handle Robend 3000	764C22000	1
M21	Capaciter Robend 3000 0,22F	764C22100	1
M22	Switch Robend 3000 230V	764C22200	1
M22	Switch Robend 3000 110V	764C23100	1
M23	Press spring Robend 3000	764C22300	1
M24	Switch safety button Robend 3000	764C22400	1
M25	Lower handle Robend 3000	764C22500	1
M26	Switch button Robend 3000	764C22600	1
N1-a	Guide shoe for Cu, Steel - 12 mm	762031500	1
N1-b	Former 12mm	762035000	1
N2-a	Guide shoe for Cu, Steel - 14 mm	762031600	1
N2-b	Former 14mm Robend 2000/3000/4000	762035100	1
N3-a	Guide shoe for Cu, Steel - 15 mm	762031700	1
N3-b	Former 15mm	762035200	1
N4-a	Guide shoe for Cu, Steel - 16 mm	762031800	1
N4-b	Former 16mm	762035300	1
N5-a	Guide shoe for Cu, Steel - 18 mm	762031900	1
N5-b	Former 18mm Robend 2000/3000/4000	762035400	1
N6-a	Guide shoe for Cu, Steel - 22 mm	762032100	1
N6-b	Former 22mm	762035600	1
N7-a	Guide shoe for Cu, Steel - 28 mm	762032200	1
N7-b	Former 28mm	762035700	1
N8-a	Guide shoe for Cu, Steel - 32 mm	762032300	1
N8-b	Former 32 mm/1.1/4"	1200001292	1
N9-a	Guide shoe for Cu, Steel - 1/2"	762051500	1
N9-b	Former 1/2"	762055100	1
N11-a	Guide shoe for Cu, Steel - 1"+ 25 mm	762052200	1
N11-b	Former 1"	762055800	1
N12-a	Guide shoe for Cu, Steel - 1.1/8"	762052300	1
N12-b	Former 1.1/8"	762055900	1
N13	Guide shoe for Steel DIN 2440/2441 - 1/4"	762061600	1
N14	Guide shoe for Steel DIN 2440/2441 - 3/8"	762061700	1
N15-a	Guide shoe for Steel DIN 2440/2441 - 1/2"	762061800	1
N15-b	Former 1/2" ST 2440	762065300	1
N16-a	Guide shoe for Steel DIN 2440/2441 - 3/4"	762061900	1
N16-b	Former 3/4" ST 2440	762065400	1
N17-a	Guide shoe for 7/8"	762052100	1
N17-b	Former 7/8"	762055700	1
N18-a	Guide shoe for 35mm/ 1.3/8"	1200001984	1
N18-b	Former 35mm/1.3/8" ROBEND 4000	1000001562	1
N19-a	Guide shoe for 5/8"	762051700	1
N19-b	Former 5/8"	762055300	1

IMPORTANT! To assure safety and reliability, repairs, maintenance and adjustment must be preformed by ROTHENBERGER Kelkheim or authorized Service-Centers. Always use Original-Service-Parts. Order your accessories and spare parts from your specialist retailer or using RoService+ online.